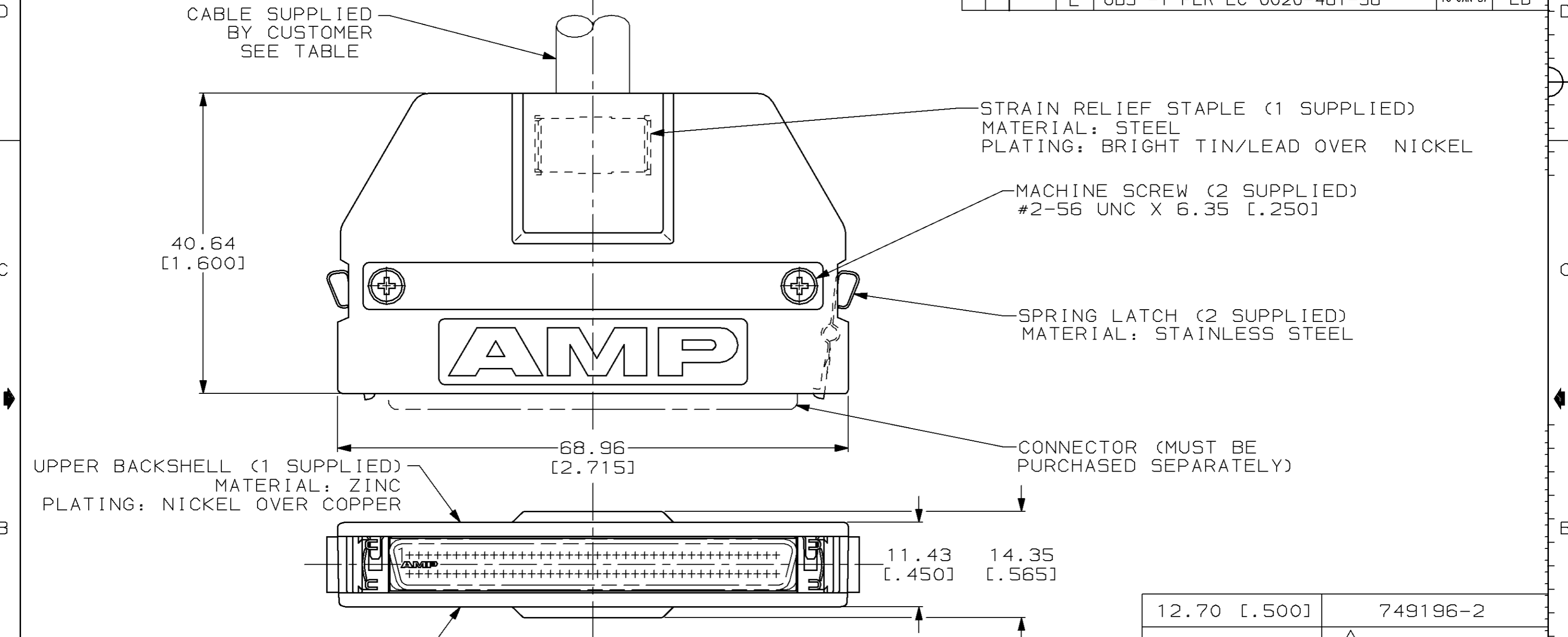


THIS DRAWING IS UNPUBLISHED. RELEASED FOR PUBLICATION, 19
 © COPYRIGHT 19 BY AMP INCORPORATED. ALL INTERNATIONAL RIGHTS RESERVED.

LOC	DIST	P	F	ZONE	LTR	DESCRIPTION	DATE	APPD
BD	95				D	ADDED -2 PER NPR 3466	05/02/91	-
					E	OBS -1 PER EC 0020-481-96	10 JAN 97	LB



UPPER BACKSHELL (1 SUPPLIED)
 MATERIAL: ZINC
 PLATING: NICKEL OVER COPPER

LOWER BACKSHELL (1 SUPPLIED)
 MATERIAL: ZINC
 PLATING: NICKEL OVER COPPER

1 OBSOLETE PART NUMBER.

12.70 [.500]	749196-2
10.67 [.420]	1 749196-1
MAX CABLE DIA	PART NO

DO NOT SCALE PRINT. UNLESS SPECIFIED DIMENSIONS IN mm [INCHES] TOLERANCES ON: 2 PLC DEC ± - 3 PLC DEC ± 0.38 [.015] ANGLES ± -	DR 12-20-88 M.A. McCAFFREY
	CHK 12-20-88 M.E. SHIRK
	APPD 12-20-88 J. BROSCARD
	APPD 12-20-88 C.E. REYNOLDS
MATERIAL -	PRODUCT SPEC -
FINISH -	APPLICATION SPEC -
	WEIGHT -

AMP INCORPORATED Harrisburg, Pa. 17105		NAME	
		INDIVIDUAL KIT, UNASSEMBLED, 80 POSITION, STRAIGHT EXIT, UNKEYED, AMPLIMITE .050 Series	
SIZE	FSCM NO	DRAWING NO	
B	00779	749196	
SCALE	2:1	SHEET	1 OF 1